

Biotin Anti-Human CD4 (HIT4a) Monoclonal Antibody



天津三箭生物技术股份有限公司
Tianjin Sungene Biotech Co., Ltd.
精准 高效 稳定 Precision Efficient Stable

Catalog Number	Vial Size
H20042-08A	25 µg
H20042-08C	100 µg

Market | 400-621-0003
marketing@sungenebiotech.com

Support | 022-66211636-8024
techsupport@sungenebiotech.com

Web | www.sungenebiotech.com

Important Note: Centrifuge before opening to ensure complete recovery of vial contents.
This product is guaranteed up to one year from purchase.

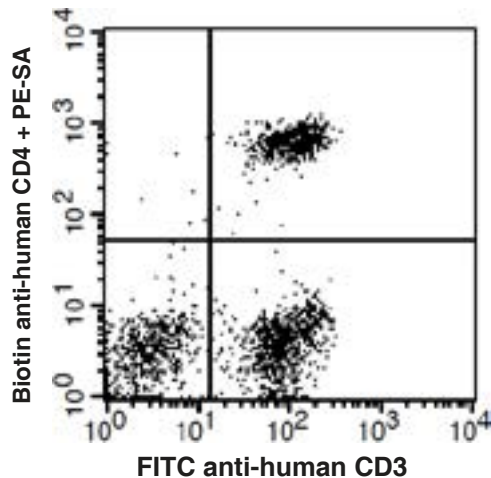
Purified Antibody Characterization

Clone	Isotype	Reactivity
HIT4a	Mouse IgG2b	Human

Description

CD4, also known as T4, is a 55 kD single-chain type I transmembrane glycoprotein expressed on most thymocytes, a subset of T cells, and monocytes/macrophages. CD4, a member of the Ig superfamily, recognizes antigens associated with MHC class II molecules and participates in cell-cell interactions, thymic differentiation, and signal transduction. CD4 acts as a primary receptor for HIV, binding to HIV gp120. CD4 has also been shown to interact with IL-16. The OKT4 antibody binds to the D3 domain of CD4 and does not block HIV binding.

Illustration of Immunofluorescent Staining



Human peripheral blood lymphocytes stained with Biotin anti-human CD4, followed by PE-SA and FITC anti-human CD3

Product Information

Conjugation: Biotin

Concentration: 0.5 mg/ml

Formulation: PBS pH 7.2, 0.09% NaN₃, 0.2% BSA

Storage: Keep as concentrated solution. Store at 4°C and protected from prolonged exposure to light. **Do not freeze.**

Application: Recommended Application: FC

Usage: Each lot of this antibody is quality control tested by immunofluorescent staining with flow cytometric analysis (The amount of the reagent is suggested to be used $\leq 0.5 \mu\text{g} / 10^6$ cells in 100 μl .). Since applications vary, the appropriate dilutions must be determined for individual use.

References

- [1] Center D et al. 1996. Immunol. Today 17:476.
- [2] Gaubin M et al. 1996. Eur. J. Clin. Chem. Clin. Biochem. 34:723.

For Research Use Only.